

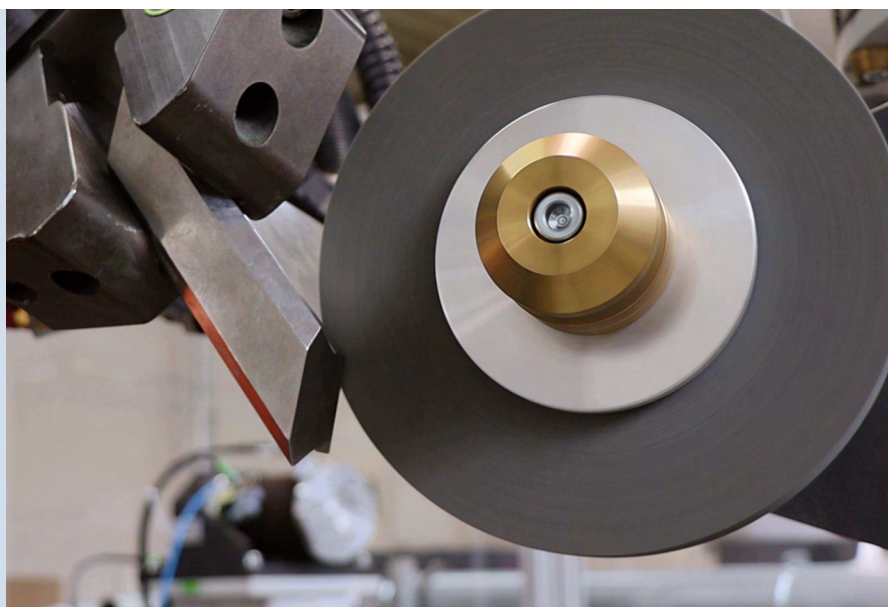
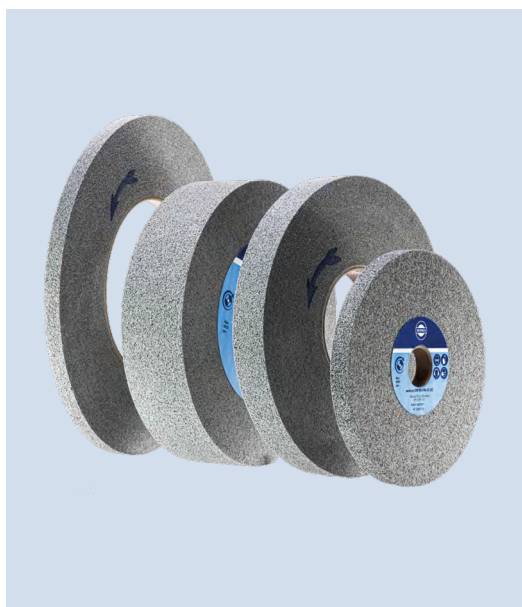


WEBRAX-CW

Non-woven convolute wheels for deburring and surface finishing of metal workpieces

Your advantages

- Very long tool life with consistent high quality results
- Refined, reproducible surface finish
- Designed for the processing of flat or intricately contoured surfaces
- Manual and automated application
- Top price / performance ratio




	WEBRAX-CW	COMPETITOR
Application	Manual deburring of bores on crankshafts made of hardened and tempered alloyed steel	
Deburring quality	■ ■ ■	■ ■ ■
Surface roughness (R_a)	■ ■ ■	■ ■ ■
Price/Performance ratio	■ ■ ■	■ ■ ■



for an
excellent finish

webrax-CW

Non-woven convolute wheels for deburring
and surface finishing of metal workpieces

Materials	Metals such as aluminum, steel, stainless steel, titanium, nickel, cobalt-chromium alloys		
Work pieces	Turbine blades, motor parts, tanks, vessels, housings, stamped metal sheets, tubes, implants, surgical instruments		
Application areas	Manual or robotic applications for the <ul style="list-style-type: none"> • Removal of burrs and sharp edges • Elimination of small defects or discolorations • Surface finish with low roughness values 		
Abrasive grain	Silicon carbide (S) or aluminum oxide (A)		
Bonding	Resin (free from tissues of animal origin)		
Backing	Nylon non-woven		
Specifications	 7S-FIN DE = softest wheel 8S-FIN DE 9S-FIN-X2 DE = hardest wheel 8A-MED DE = highest removal rate		
Dimensions	Outer-Ø	Width	Inner-Ø
	152.4 mm / 6"	12.7 mm / 1/2"	25.4 mm / 1"
	203.2 mm / 8"	25.4 mm / 1"	76.2 mm / 2"
	254.0 mm / 10"	12.7 mm / 1/2"	127.0 mm / 5"
	Additional dimensions available upon request		
Further information	For an overview of all available stock items, please refer to our separate webrax-CW stock list.		

HERMES 
CONNECT

The fastest way to your abrasives!

With your personal **HERMES CONNECT** account, you can quickly and easily access all the information, availability, delivery times and prices of our products, and order them directly with just a few clicks.



HERMES Schleifmittel GmbH

Taskoepruestrasse 1 • 22761 Hamburg • Germany
For more information, literature and contacts,
visit hermes-abrasives.com

